

# The Harman Accentra

Sealed hopper  
holds up to 50  
pounds of pellets



Top view of the  
tinted glass  
hopper lid



Nautical Medallion  
adds style even  
without a fire



State-of-the-art,  
whisper-quiet,  
variable-speed  
blower

Large decorative  
glass door

Exclusive air wash  
system keeps  
door glass cleaner,  
longer

Dual point  
latching system with  
single handle

Large door opens  
the front of the  
stove for fast &  
easy cleaning

Optional battery  
backup

## The Harman Accentra

The Accentra is by far the best pellet stove on the market with traditional cast iron styling. The remarkable features on this stove enhance performance and make it even easier to enjoy the warmth and convenience of pellet heat. The Accentra is state-of-the-art in every way.

From the moment you lift the door handle you know this is a stove built to

a quality standard far above any other cast iron pellet stove on the market. The castings are smooth and detailed and the understated appearance accents a wide range of décor styles. And with the optional cast iron hearth pad and the outside air kit, you can install an Accentra where other pellet stoves can't go.

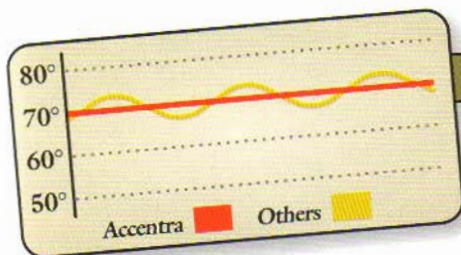
## Temperature Control



The Accentra has a remarkably precise temperature control system built right in so you won't need an old-fashioned thermostat. The Harman Accentra constantly monitors room temperatures and makes automatic adjustments to the pellet feed rate and combustion air so you get very even heating. It even turns

itself off and on as needed. Your home is kept warm and comfortable without the rapid fluctuations in temperatures common to other pellet stoves.

The Accentra is so advanced it will keep the room temperature just where you want it, regardless of the quality of pellets you burn or the frequency you clean your stove.



## Consistent Temperature

The Accentra does not use a thermostat as do other pellet stoves, but rather a tiny sensing probe that sends information to the micro-processor on the stove. This information is used to feed the proper amount of fuel at the right time to keep you warm and comfortable. The Accentra also has a Stove Temp Mode that allows you to set the stove temperature as desired rather than the room temperature.

## Features

### Automatic Temperature Control

The Accentra's automatic temperature control system eliminates the warm/cold cycle associated with the thermostatically controlled heating systems and even turns the Accentra on and off as needed.

### Dependable Auto-Ignition

The Accentra uses special heat transfer disks on the outside of the Harman igniter to transfer heat away from the igniter's core and increase durability.

### Super-Sized Ash Pan

The large ash pan greatly reduces the number of times you will need to empty the ashes during a season. Some pellet stoves have small toaster oven-sized ash pans, while the Accentra's ash pan will let you burn almost a ton of pellets before you have to empty it.

### Clean Glass for Fireviewing

The Accentra's large window stays remarkably clean so you can enjoy the fire for much longer periods of time without having to clean the glass. The Accentra will easily go for weeks between cleanings while other pellet stoves need to be cleaned at least once a week!

### Performance

The Accentra has been carefully engineered to provide very quiet operation. Convection air passageways have been enlarged and designed aerodynamically to reduce airflow noise. Fans and motors are rubber mounted, the engine compartment is insulated, leveling screws with rubber pads eliminate vibration between the stove, and the hearth pad and a two-stage convection fan gives you the capability to cut sound even further.

## Convenience

The Accentra can burn up to a ton of pellets without the need for ash removal or cleaning. When needed, the entire stove can be cleaned in less than half an hour.

## Value

The Accentra delivers high overall efficiencies due to the unique cast iron heat exchanger. The heat exchanger is accordion shaped so the maximum amount of heat from the flue gases gets transferred out into the room. The Accentra is rated at 40,000 BTUs/per hour and will typically heat 1450-sq. ft. of living space in the Northeast.

*That's Real Value.*

*That's the Harman Difference!*

## Features:

- New fresh, clean design
- New cast iron heat exchanger provides greater heat exchange surface in less space
- New cast iron feeder, patented
- New tinted glass hopper lid
- 50 pound hopper capacity
- New 102 square inches of cleaner glass
- New quieter operation
- Automatic ignition
- ESP control
- 0 - 40,000 BTUs
- Room sensor
- Harman quality, fit, and finish

## Options:

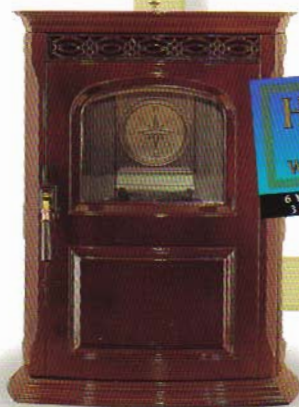
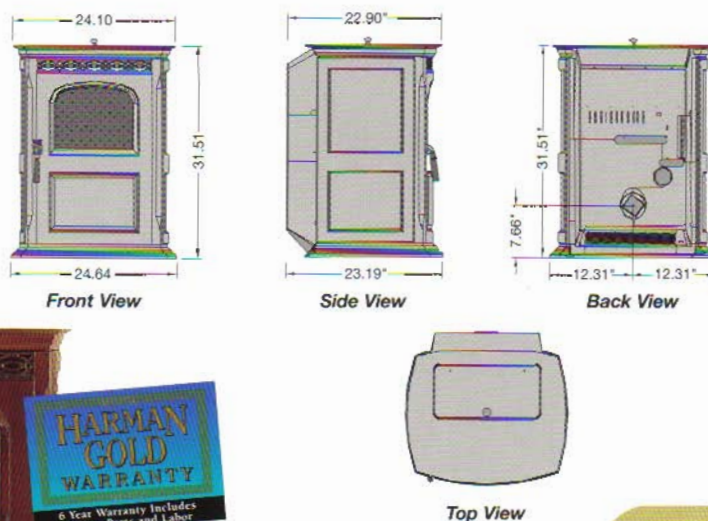
- Enamel finish
- Cast iron hearth pad (28 5/8" x 24 1/16")
- Outside air kit
- Custom colors

## Specifications:

BTU Range	0 to 40,000
Hopper Capacity	50 lbs.
Fuel	Wood Pellets
Blower Size	150 cfm
Outside Air Size	2.375 in.
Height	31.5 in.
Width	24.6 in.
Depth	23.2 in.
Weight	370 lbs.
Fuse Rating	5 amp
Venting Size	3 in. Pellet Vent Pipe
Feed Rate	.75 lb. per hour (minimum) 4.75 lbs. per hour (maximum)

Clearance to Combustibles	Rear:	2.25 in.
	Side:	12 in.
	Front:	6 in.

## Clearances and Dimensions:



Safety testing by Omni Testing Laboratory  
ASTM-E1509 • ULC-C1482 • Oregon-814-23-900  
per 40CFR-60.530 sup. part AAA  
per EPA method 28A and 5G



### HARMAN STOVE COMPANY

352 Mountain House Road • Halifax, PA 17032

Phone: (717) 362-9080 • Customer Service: (717) 362-1422

Fax: (717) 362-4251 • [www.harmanstoves.com](http://www.harmanstoves.com)

E-mail: [sales@harmanstoves.com](mailto:sales@harmanstoves.com)

### Your Harman Dealer Is:

**FURNACELAND**  
550 3rd Ave.  
Prince George, B.C.  
V2L 3C2 250-564-1414  
[www.furnaceland.bc.ca](http://www.furnaceland.bc.ca)